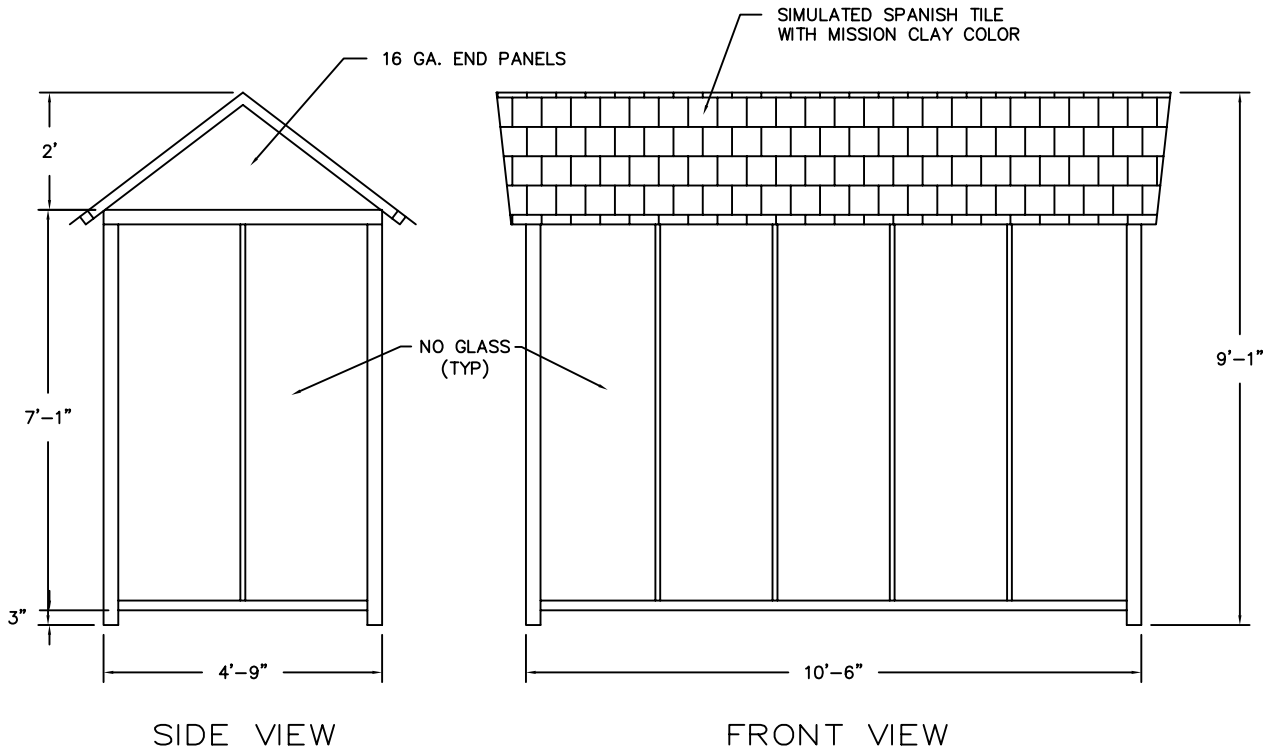


REVISIONS				APPROVALS	
DESCRIPTIONS	BY	DATE	APPROVED	COUNCIL	RESOLUTION



CONSTRUCTION NOTES

1. ALL FRAME WORK TO BE 3"x3"x0.120" A500 STEEL TUBING WITH 1"x3"x0.065" A500 STEEL TUBING FOR MULLIONS, AND 2"x3"x0.120" A500 STEEL TUBING FOR BOTTOM SILLS.
2. UNIT TO HAVE CUSTOM DESIGNED PEAK STYLE ROOF CONSTRUCTED OF 2"x2" STEEL TUBE FRAMES WITH 16GA. DECKING FINISH WITH 26GA. SIMULATED SPANISH TILE WITH MISSION CLAY COLOR. ENDS TO BE 16GA. STEEL PAINTED THE SAME COLOR AS THE REST OF THE SHELTER.
3. ALL EXPOSED STEEL SURFACES EXCEPT ROOF DECK TO BE COATED WITH TWO COMPONENT HIGH SOLIDS POLYURETHANE RUST INHIBITIVE PRIMER, AND TWO COMPONENT HIGH SOLIDS POLYURETHANE FINISH COAT. COLOR TO BE BLACK.
4. UNIT TO HAVE FOUR ADJUSTABLE ANCHOR FEET SHIPPED LOOSE. UNIT TO BE ANCHORED BY 1/2" BOLTS WITH 3" MINIMUM EMBEDMENT IN 2500 PSI CONCRETE. EACH FOOT REQUIRES TWO BOLTS FOR ANCHORAGE AND ONE 1/2" STANDARD BOLT FOR FOOT CONNECTION TO POST. CONCRETE, HARDWARE AND INSTALLATION BY OTHERS.
5. BENCHES INSTALLED IN SHELTER SHALL BE LOCATED TO ONE SIDE. THERE SHALL BE 4 FEET OF CLEAR SPACE FOR WHEELCHAIR AREA.
6. BUS SHELTER SHALL BE PLACED WITH A MINIMUM 48 INCH TRAVEL PATH IN FRONT OF STRUCTURE. WHERE SIDEWALK IS NOT WIDE ENOUGH TO ACCOMMODATE 48 INCH TRAVEL PATH, A CONCRETE PAD SHALL BE PLACED BEHIND EXISTING SIDEWALK IN ACCORDANCE WITH CITY STANDARD DRAWING NO. 419. BUS SHELTER SHALL BE LOCATED ON NEW PAD.

DRAWN BY: JAV	CITY OF ATASCADERO ENGINEERING DEPARTMENT	DRAWING NO.
DESIGNED BY: JAV		431
DATE: 4/10/2003	BUS SHELTER	
FILE NAME: AT431.DWG		