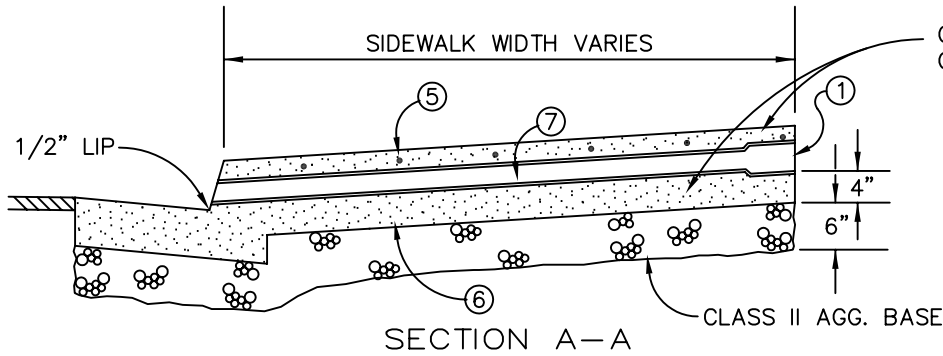
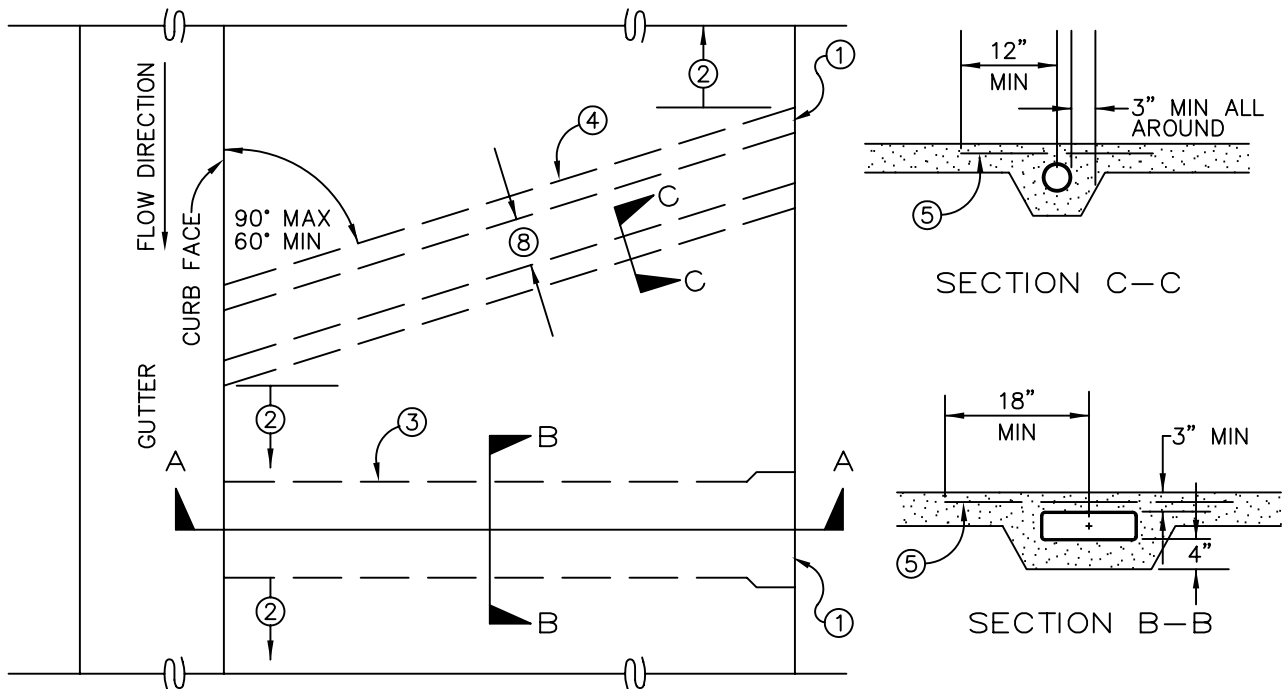


REVISIONS				APPROVALS	
DESCRIPTIONS	BY	DATE	APPROVED	COUNCIL RESOLUTION NO.	3/10/92



- ① INLET SHALL BE PAVED SWALE, RECTANGULAR CONDUIT OR PIPE(S). MAX. INLET DIAM./HEIGHT SHALL BE CURB HEIGHT MINUS 3 INCHES. INLET CONDUITS LARGER THAN 3" DIAM./HEIGHT MUST BE REDUCED WITH A MANIFOLD OR JUNCTION BOX. A JUNCTION BOX SHALL HAVE ACCESS/CLEANOUT. INLET TYPE SHALL BE APPROVED BY THE CITY ENGINEER.
- ② UNDERDRAIN SHALL NOT BE CLOSER THAN 5 FEET TO A DRIVEWAY OR CURB RETURN.
- ③ RECTANGULAR CAST IRON PIPE – ALHAMBRA A-470, OR APPROVED EQUAL.
- ④ CAST IRON PIPE – 3" MAX. DIAM. (6" CURB) – 4" MAX. DIAM. (8" CURB) GALVANIZED
- ⑤ #4 REBAR AT 12" O.C.
- ⑥ CONCRETE SHALL BE CLASS B
- ⑦ CHANNEL SLOPE SHALL BE NO LESS THAN 2% AND SHALL BE PARALLEL WITH SIDEWALK SURFACE.
- ⑧ MULTIPLE DRAINS SHALL HAVE 6" MIN. CLEARANCE WITH MAX. OF 3 DRAINS PER 10 FEET OF SIDEWALK. DRAINS SHALL NOT EXTEND BEYOND CURB FACE INTO GUTTER.

DRAWN BY: R.A.L.	CITY OF ATASCADERO ENGINEERING DEPARTMENT	DRAWING NO.
DESIGNED BY: S.J.S.		511
DATE: 2/27/92	SIDEWALK UNDERDRAIN WITH PIPES	
FILE NAME: AT511.DWG		