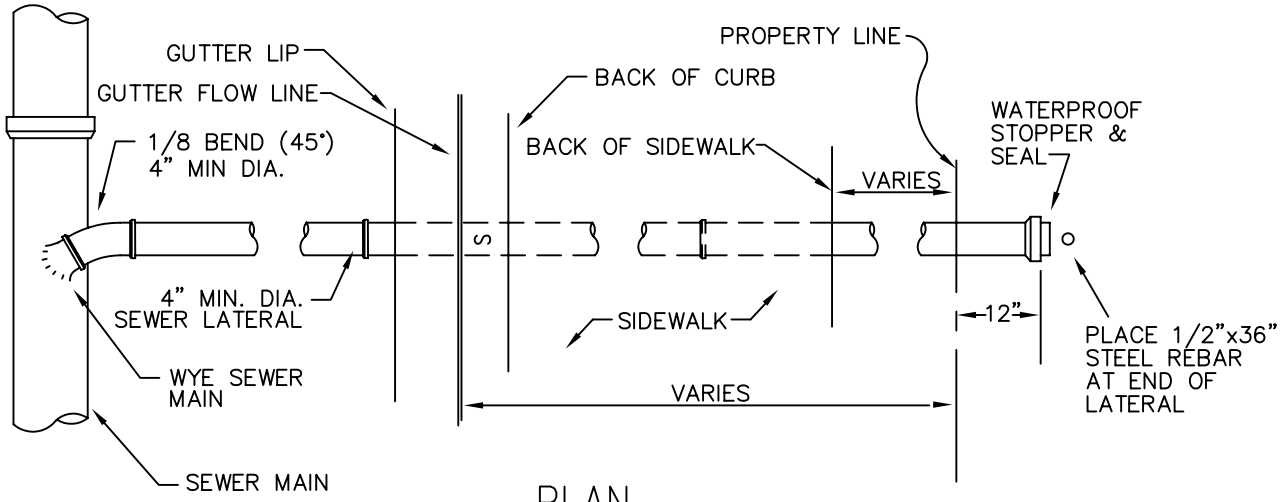
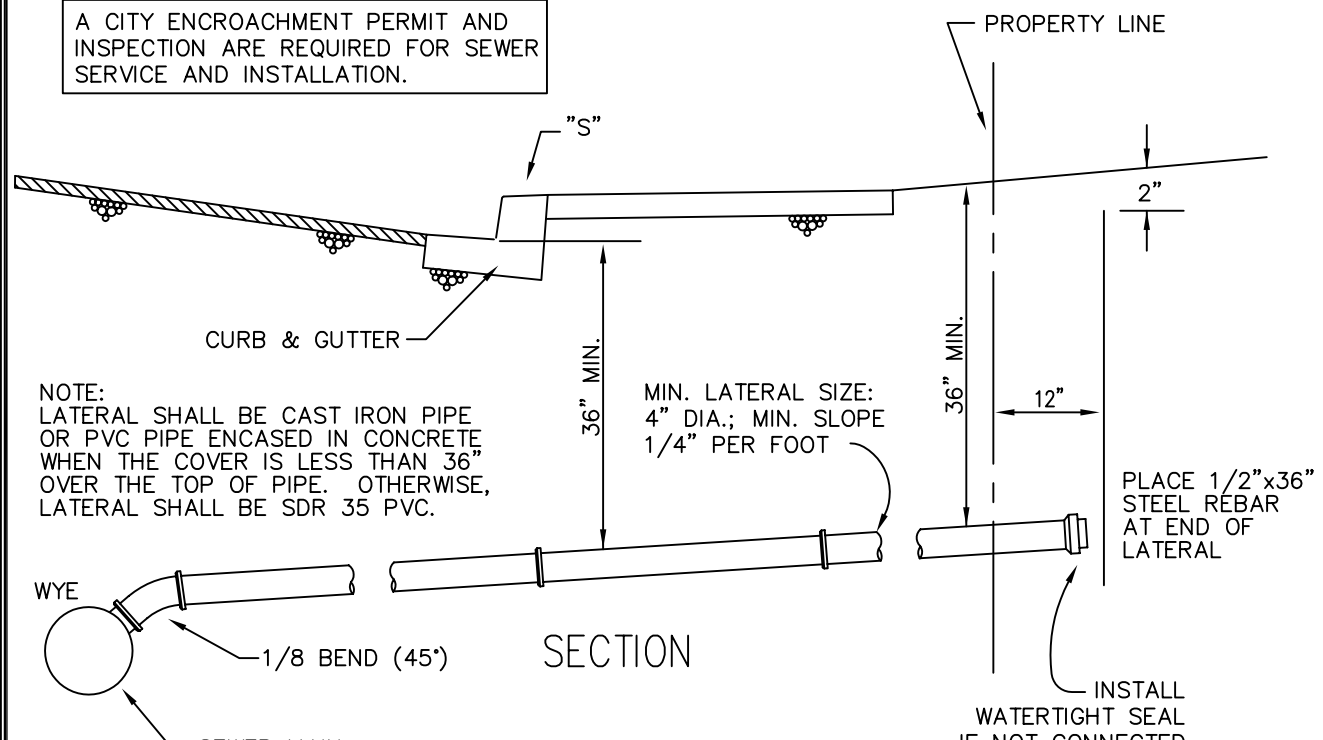


| REVISIONS | | | | APPROVALS | |
|--------------|----|------|----------|------------------------|---------|
| DESCRIPTIONS | BY | DATE | APPROVED | COUNCIL RESOLUTION NO. | 3/10/92 |
| | | | | | |
| | | | | | |



PLAN

A CITY ENCROACHMENT PERMIT AND INSPECTION ARE REQUIRED FOR SEWER SERVICE AND INSTALLATION.



SECTION

NOTE:
LATERAL SHALL BE CAST IRON PIPE OR PVC PIPE ENCASED IN CONCRETE WHEN THE COVER IS LESS THAN 36" OVER THE TOP OF PIPE. OTHERWISE, LATERAL SHALL BE SDR 35 PVC.

NOTES:

1. "S" SHALL BE MARKED ON CURB OVER LATERAL.
2. THE "S" SHALL BE STAMPED INTO NEW CONCRETE AND SHALL BE CHISELED INTO EXISTING CONCRETE.
3. THE "S" SHALL BE NOT LESS THAN 3" HIGH, 2" WIDE AND 3/16" DEEP.
4. MAINTAIN MINIMUM 5' HORIZONTAL SEPARATION FROM WATER SERVICE.
5. INSTALL MAGNETIC TAPE AT A DEPTH OF 24"-32", THEN UP TO SURFACE.

| | | |
|-------------------------|--|-------------|
| DRAWN BY: V.S. | CITY OF ATASCADERO ENGINEERING DEPARTMENT | DRAWING NO. |
| DESIGNED BY: V.S. | | 603 |
| DATE: 2/27/92 | SEWER LATERAL LOCATION | |
| FILE NAME: AT603.DWG | | |