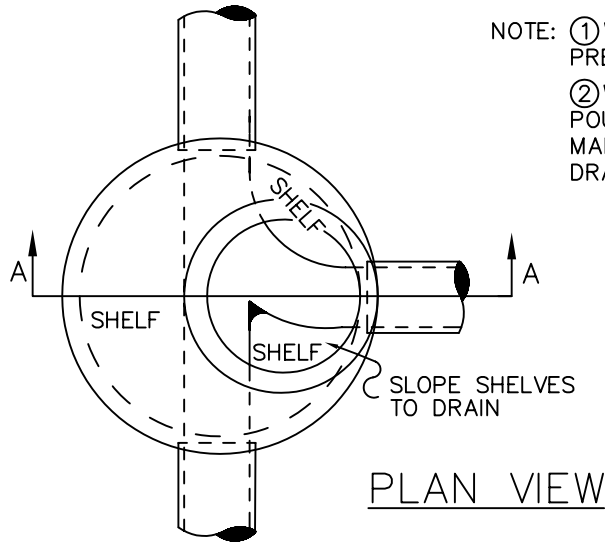


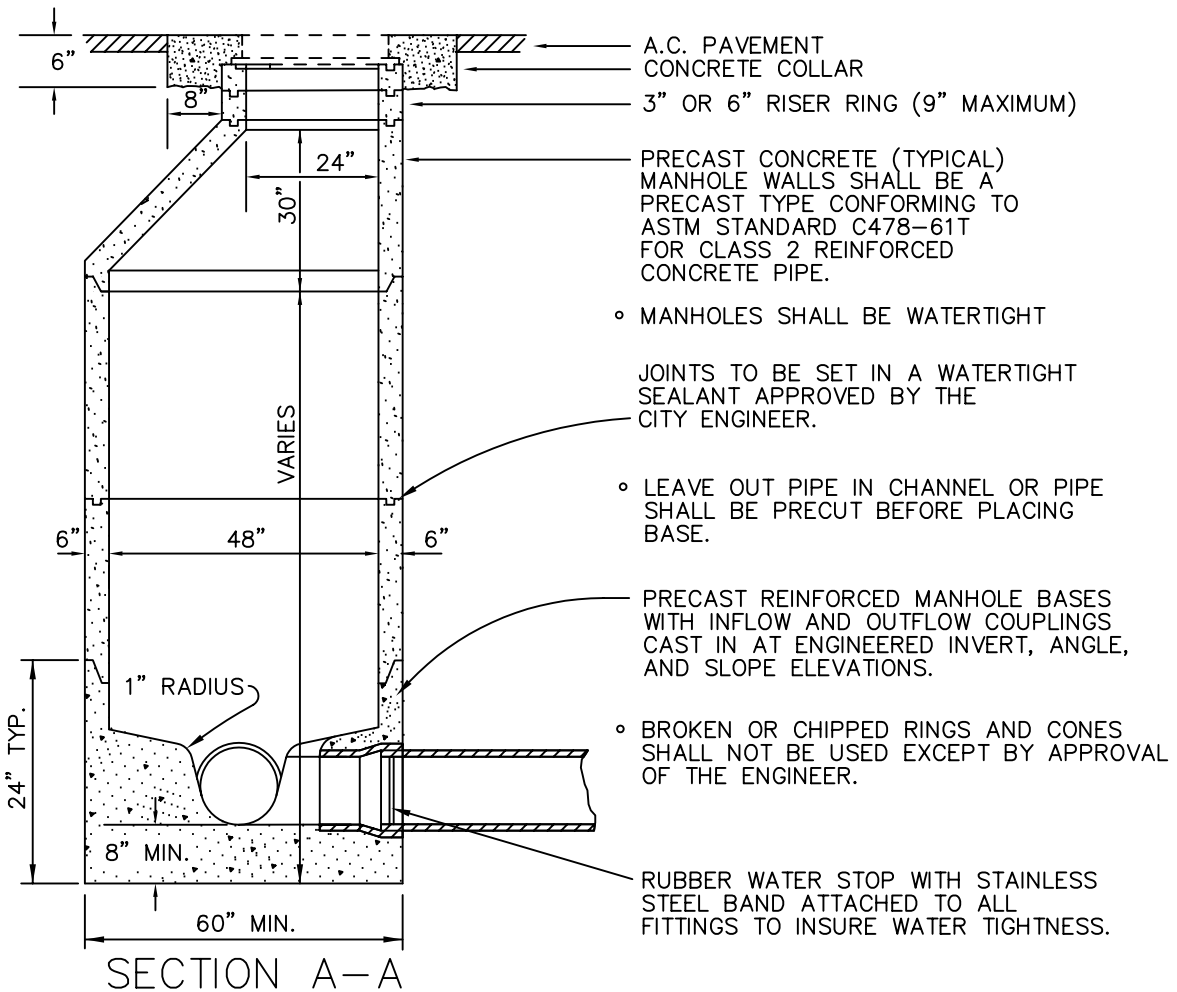
| REVISIONS | | | | APPROVALS | |
|--------------|----|------|----------|------------------------|---------|
| DESCRIPTIONS | BY | DATE | APPROVED | COUNCIL RESOLUTION NO. | 3/10/92 |
| | | | | | |
| | | | | | |



NOTE: ① WITH NEW SEWER INSTALLATIONS:
 PRECAST REINFORCED MANHOLE BASES
 ② WITH EXISTING SEWER:
 POURED IN PLACE CLASS "A" CONCRETE
 MANHOLE BASE PER S.L.O. CO. STANDARDS
 DRAWING NO. S-3

MANHOLE FRAME AND COVER TO CONFORM
 WITH STANDARD DETAIL NO. 608

PLAN VIEW



| | | |
|-------------------------|--|-------------|
| DRAWN BY: R.A.L. | CITY OF ATASCADERO ENGINEERING DEPARTMENT | DRAWING NO. |
| DESIGNED BY: S.J.S. | | 606 |
| DATE: 02/27/92 | TYPICAL ECCENTRIC - CONE PRECAST CONCRETE MANHOLE | |
| FILE NAME: AT606.DWG | | |